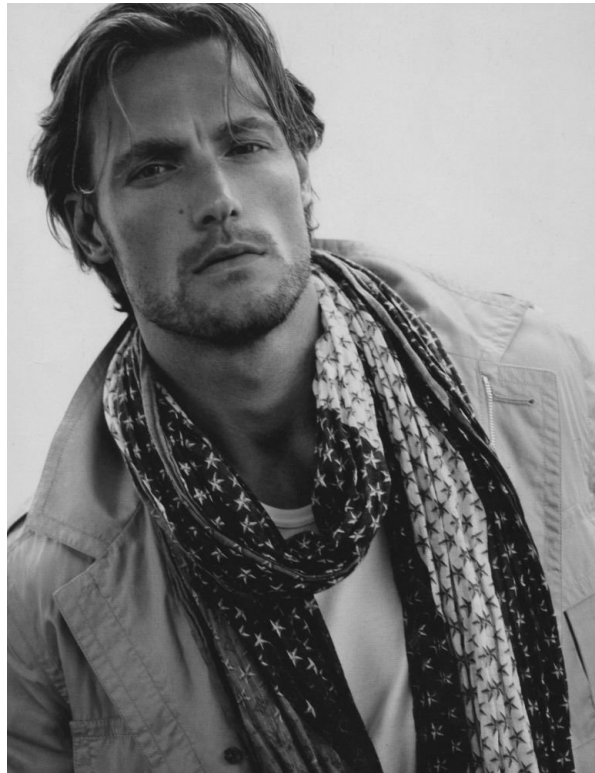


GABRIEL AUBRY

HEIGHT: 187CM WAIST: 85CM INSEAM: 84CM SUIT: 41 L UK, 51 L EU
SHIRT: 40CM SHOES: 11.5 UK, 46.5 EU EYE COLOR: GREEN
HAIR COLOR: BLONDE



GABRIEL AUBRY

HEIGHT: 187CM WAIST: 85CM INSEAM: 84CM SUIT: 41 L UK, 51 L EU
SHIRT: 40CM SHOES: 11.5 UK, 46.5 EU EYE COLOR: GREEN
HAIR COLOR: BLONDE



GABRIEL AUBRY

HEIGHT: 187CM WAIST: 85CM INSEAM: 84CM SUIT: 41 L UK, 51 L EU
SHIRT: 40CM SHOES: 11.5 UK, 46.5 EU EYE COLOR: GREEN
HAIR COLOR: BLONDE



GABRIEL AUBRY

HEIGHT: 187CM WAIST: 85CM INSEAM: 84CM SUIT: 41 L UK, 51 L EU
SHIRT: 40CM SHOES: 11.5 UK, 46.5 EU EYE COLOR: GREEN
HAIR COLOR: BLONDE



IMG MODELS
WWW.IMGMODELS.COM

GABRIEL AUBRY

HEIGHT: 187CM WAIST: 85CM INSEAM: 84CM SUIT: 41 L UK, 51 L EU
SHIRT: 40CM SHOES: 11.5 UK, 46.5 EU EYE COLOR: GREEN
HAIR COLOR: BLONDE



IMG MODELS
WWW.IMGMODELS.COM

GABRIEL AUBRY

HEIGHT: 187CM WAIST: 85CM INSEAM: 84CM SUIT: 41 L UK, 51 L EU
SHIRT: 40CM SHOES: 11.5 UK, 46.5 EU EYE COLOR: GREEN
HAIR COLOR: BLONDE



IMG MODELS
WWW.IMGMODELS.COM

GABRIEL AUBRY

HEIGHT: 187CM WAIST: 85CM INSEAM: 84CM SUIT: 41 L UK, 51 L EU
SHIRT: 40CM SHOES: 11.5 UK, 46.5 EU EYE COLOR: GREEN
HAIR COLOR: BLONDE

CLOTHING LACOSTE



Chateau Marmont, Hollywood, California

"The shot with the shoe was quite painful since the shoe was too small. It took me about thirty minutes to put on, and I kept it on for about thirty seconds before almost fainting." —Gabriel

GABRIEL BY ELLEN VON UNWERTH
Styling Jessica de Ruiter

GRACINGS AUTUMN SWEATERS FOR LAURA METSKER (TRACEY & MATTRESS)
HAIR RESTYLING BY FOR DAVID HANBY FOR HELMUT LANG (MATTRESS)
MODEL: GABRIEL AUBRY (MILKMAN)
PHOTO ASSISTANTS CHRISTOPH LANGE AND ANTONIO GIACCO
DIGITAL TECHNICIAN SCOTT DAVIS RETOUCHING CHARLES GARNETT

IMG MODELS
WWW.IMGMODELS.COM

GABRIEL AUBRY

HEIGHT: 187CM WAIST: 85CM INSEAM: 84CM SUIT: 41 L UK, 51 L EU
SHIRT: 40CM SHOES: 11.5 UK, 46.5 EU EYE COLOR: GREEN
HAIR COLOR: BLONDE



For laid-back fun, keep your jacket for a cool cardigan. **THIS PAGE:** On: Angèle; Sweater and shirt, \$500; jacket with jacket, **MaxMara**; 100% MAX MARA, bra, \$198; **Agent Provocateur**, 212-965-0229; Agamirini and diamond ring, \$16,000; and necklace, \$70,000; **Verdura**, Bag, \$6000, by special order; **Hermès**; Sandals, \$400; **Jimmy Choo**; On: **Cuboris**; Blazer (sold with pants), \$1000; **Richard James**; **Designart Goodswear**; 212-733-7300; Cashmere turtleneck, \$775; **Ricki Lauren Purple Label**; 800-475-7074; Jeans, \$130; **Marc by Marc Jacobs**; 212-904-0001; **Diophane** watch, \$54,300; **Patek Philippe** shoes, \$400; all **Decker**. **OPPOSITE PAGE:** On: Angèle; Jacket, \$3665; and dress, \$4700; necklaces, bag, and pumps, all price upon request; **Chanel**, 800-500-0000; On: Gabriel; Jacket, \$295; shoes, \$125; and trousers, \$185; **BOSS Hugo Boss**; 800-HUGO-BOSS; Shoes, price upon request; **Lois Vuitton**; See Where to Buy for details. Model: Angèle Lipshil and Gabriel Aubry; Hair: James Brown for Van Michael Salvo; makeup: Frank B.; manicure: Gina Viviano

IMG MODELS
WWW.IMGMODELS.COM

GABRIEL AUBRY

HEIGHT: 187CM WAIST: 85CM INSEAM: 84CM SUIT: 41 L UK, 51 L EU
SHIRT: 40CM SHOES: 11.5 UK, 46.5 EU EYE COLOR: GREEN
HAIR COLOR: BLONDE



IMG MODELS
WWW.IMGMODELS.COM

GABRIEL AUBRY

HEIGHT: 187CM WAIST: 85CM INSEAM: 84CM SUIT: 41 L UK, 51 L EU
SHIRT: 40CM SHOES: 11.5 UK, 46.5 EU EYE COLOR: GREEN
HAIR COLOR: BLONDE



IMG MODELS
WWW.IMGMODELS.COM